



H A N D C R A F T E D

OUTDOOR COOKING EQUIPMENT

FOR THE SERIOUS PITMASTER

PRODUCT
CATALOG





From a Small Farm Welding Shop

Like many great barbecue stories, ours began when a guy wanted to roast a pig.

In the early 1980s, Dad was an inventor with a small custom welding shop, and when our neighbor asked him to build a pig roaster, he was happy to oblige.

The pig roaster was a hit, and more neighbors started putting in orders, until Dad found himself building barbecue pits full-time.

More than forty years on, we're still driven by the same passion that drove Dad: to make your outdoor cooking experience so easy, fun, and successful that you'll want to cook every chance you get.

Today you're spoiled for choice, with a full line of Meadow Creek grills, pig roasters, smokers, and mobile sinks. Each piece of equipment is still hand-built right here in the heart of Pennsylvania Dutch Country.

American barbecue culture is shaped by old-fashioned values of integrity, community, and hard work, and those values inspire everything we build. It's our greatest honor to share that tradition with you. You are the reason the Meadow Creek story is possible.

—the Stoltzfus family



OUR MISSION STATEMENT

Our mission is to build barbecue equipment that lets you do your best work, every time, so you can skip the drama and distractions and focus on sharing the best possible barbecue with your friends, family, or customers.

How to Order

1. Click the Find a Dealer button on our website.
2. Talk to your dealer to design your custom Meadow Creek pit and choose the right shipping option.
3. Fire up your new pit and level up your barbecue!

Learn more at

MeadowCreekBBQ.com



There are two keys to consistent, professional-quality barbecue:

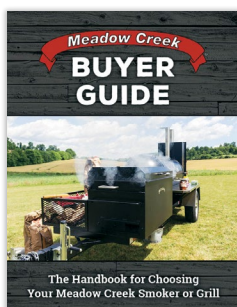
1. You have to know what you're doing
2. You have to have equipment you can trust

Cheap barbecue equipment can be fine when you're starting out. But as your skills improve and your standards rise, "good enough" isn't good enough anymore.

Want to cook a fundraiser as easily as you cook for date night? Sip drinks and chat with friends during a long cook on the smoker, without worrying about it running away or cooling off? Roll into an event with a smoker trailer that marks you as a pro before you even jump out of the truck?

Today more than ever, people are hungry for the communal meals, friendship, and connection a good pitmaster can help create. When you join the Meadow Creek community, you become part of a family bringing back the good times that make life worthwhile.

With Meadow Creek equipment, you'll always be ready to serve the best possible barbecue to the people you care about. And nothing tastes better than success.



Read our free buyer guide to learn about Meadow Creek products and find the right pit for you:

MeadowCreekBBQ.com/buyerguide

© 2024 Meadow Creek Welding, LLC

EQUIPMENT

Santa Maria Grill	04
Chicken Cookers	05
COMBI42 Grill	11
Pig Roasters	12
SK23 Steak Grill	17
Caterer's Delight Trailers	18
Tank Smokers	20
Gas Assist	24
SQ36 Offset Smoker	25
Box Smokers	26
Custom Barbecue Trailers	30
PG25 Patio Grill	31
Flat Top Grills	32
Mobile Sinks	34

FEATURE HIGHLIGHTS

Rust-Free Grates

Beat rust with T304 food grade stainless steel grates on all our equipment.

Pivoting Grates

Flip a grate of chicken instantly with pivoting sandwich grates on our chicken grills.

Positive-Lock Latches

Keep doors tight with adjustable positive-lock latches.

Custom-Built

Mix and match options to give your pit extra powers and make it cook like you want it to.

No-Drama Cooking

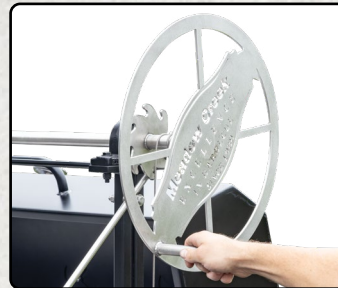
Dial in the airflow and your smoker will hold a temp for hours.

THE SANTA MARIA GRILL

new
product

Inspired by the 150-year barbecue tradition of California's Santa Maria Valley, this classic grill could make you the center of attention at your next cookout.

Santa Maria style grills are known for using a cable system to raise and lower the grate over the fire. Our classy all-stainless crank mechanism is rust-free, runs on smooth bearings, and controls the same welded stainless steel grate you know from our other pits for easy cleaning and zero corrosion.



Adjust the grate height instantly from 5 to 30 inches above the coals.



8 spin vents (4 in front and 4 in back) for total fire control



Shown with optional lid.

Model	Grate Size	Size	Weight
SM48	22" x 45"	73"h x 68"l x 33"w	400 lbs



CHICKEN COOKERS

Meadow creek grills with rotating grates make it fun and easy to grill tender, juicy chicken with delicious skin every time!

The tender, crispy chicken your guests crave has never been easier to cook. Flip a whole rack of meat with one hand on the pioneering sandwich grates, made of stainless steel so you never have to worry about rust.

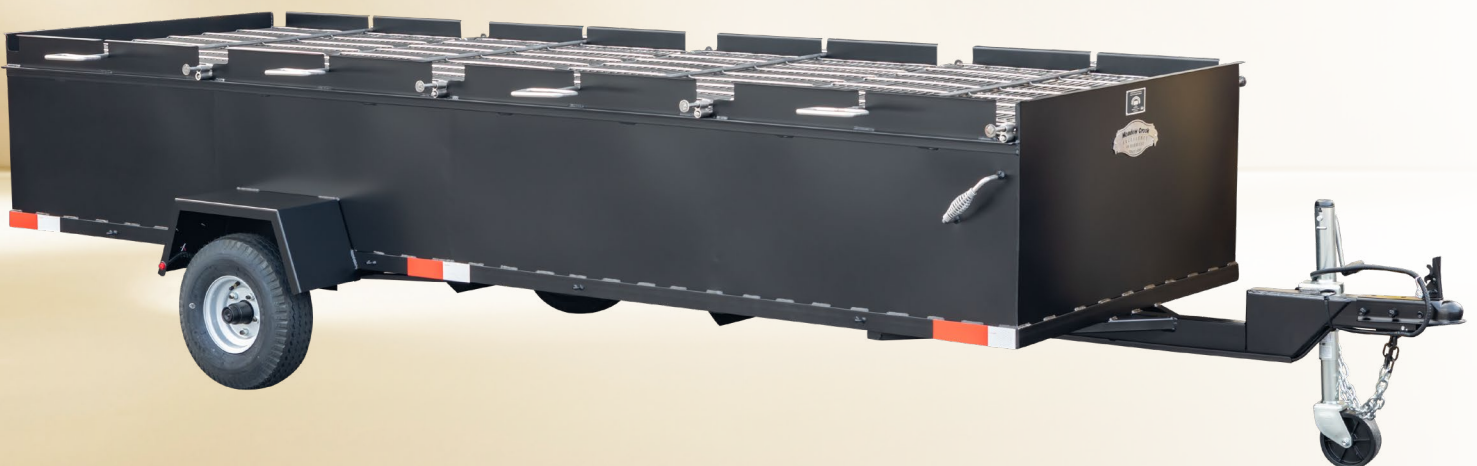
We engineered these grills to cook the perfect barbecue chicken. But you'll also love how easy they make grilled favorites like sausage, burgers, steak, and potatoes.



The food is separated from the fire by vertical distance as in a traditional block pit.

Learn more about these grills on our website and get tips for choosing the right one:

MeadowCreekBBQ.com/cc



Model	Grate Size	Size	Weight	Fuel Type	Capacities		Trailer
				Charcoal	Bone-in Chicken	Burgers	
BBQ18	12" x 16"	19"h x 25"l x 19"w	60 lb	✓	x	12	
BBQ26	16" x 24"	20"h x 32½"l x 20"w	66 lb	✓	15 lb	24	
BBQ26S	16" x 24"	45"h x 32½"l x 24"w	124 lb	✓	15 lb	24	
BBQ42	22" x 40"	45"h x 56"l x 34"w	238 lb	✓	40 lb	32	
BBQ42C	22" x 40"	22½"h x 55"l x 28½"w	166 lb	✓	40 lb	32	
BBQ64P	30" x 34"	38"h x 70"l x 50"w	400 lb	✓	80 lb	100	
BBQ96	30" x 34"	37"h x 134"l x 57"w	688 lb	✓	120 lb	150	✓
BBQ144	34" x 46"	37"h x 181"l x 70"w	1,060 lb	✓	240 lb	350	✓

Features

- ✓ Rotating double-sided grates are made of food-grade T304 stainless steel rod which won't rust.
- ✓ Grill bodies are made of 13-gauge welded steel and painted with black heat-resistant paint in an attractive matte finish.
- ✓ Models with a lid include a calibratable stainless steel thermometer.
- ✓ Trailer models are built on an angle frame and feature a 2" ball hitch and safety chains, heavy-duty wheel jack, rubber torsion axles, road tires, and DOT-compliant flush-mount LED lights, reflector strips, and VIN plate. We are a licensed trailer manufacturer and can provide a certificate of origin for trailer models.

Find a dealer or get more photos and product information at MeadowCreekBBQ.com/cc



**Sliding Locks Secure
"Sandwich" Grate**



Cool-to-the-Touch Spring Handles
on Most Models

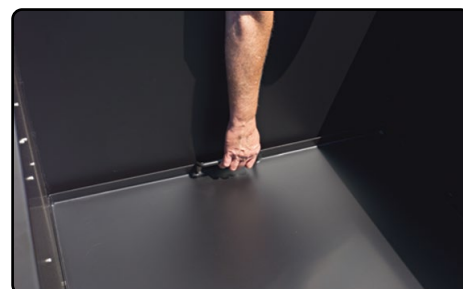
The Consistency Was Seamless...

I cooked 75–80 pounds of wings per hour on the BBQ42 without getting carpal tunnel. The consistency with each batch was seamless. Today I grilled some burgers on the unit and was truly surprised with how juicy they came out.

Calvin Steele
Fresh Squeezed
Vending Concepts



**Balanced Rotating Grates
With Comfortable Handles**



Charcoal Pan Insert
on Most Models



BBQ18
Designed for
Wings and Burgers



BBQ26
Perfect for
Camping



BBQ26S
Famous for Backyarding



BBQ42
Best-Selling Model
for Entertaining



BBQ64P
Excellent for
Roadside Vending

The BBQ26S and BBQ42 come with a lid for ultimate control over flare-ups and with brackets for raising the charcoal pan to cook steaks and burgers. The lid on these models also includes grate hooks for loading and unloading the meat and for cooking with the pan raised and the sandwich grate in the open position.



BBQ42C
40" Collapsible



BBQ96
3-Pit Trailer

BBQ144
4-Pit Trailer



Custom 8-Pit Trailer

Older model shown

Customize Your Chicken Cooker

Refer to MeadowCreekBBQ.com/cc for available options.

Perfect Chicken Every Time

I have owned your chicken cooker for about 5 years and cooked for parties of 400 and I can truly say that I have never burned up a grate full of chicken. This grill makes perfect chicken every time. It is also very well made.

Freddie Brigham



Vinyl Cover (VC)
Keep Your Cooker Clean and Dry



Flat Grate (FG)
Single-Panel Grate

Some of the Best Steaks in 40 Years...

I can extend the cook time out to an hour and a half for some nicely smoked chicken. I also have the fixed charcoal grate and griddle. By setting the charcoal pan at the higher location the cooker makes a superb charcoal grill. It cooks some of the best steaks I've done in the last 40 years.

John Moyers



Griddle (GR)
Fry Burgers and Breakfast Foods



Insulated Firebox (IF)
Available on the BBQ42

Makes Cooking Chicken Easy...

The BBQ96 is very well designed. It is easily operated by one person and makes cooking chicken easy. The lids help get more smoke into the meat and avoid flare-ups. I like that I can raise the charcoal tray and use a flat grate to grill tri-tip, steaks, or hot dogs.

Danny Scott



Hinged Lid
Standard on Some Models



Slide-Out Grates (SOG)
Available on Trailers With Roofs and Lids

Building an Outdoor Kitchen?
Ask about a grill without a stand and side handles to install in your outdoor kitchen.



The TS250 and BBQ42 chicken cooker make cooking so easy, it's nearly set it and forget it. It cooks like a dream with the tastiest chicken anywhere.

Mark Stalvey, Gaffney, SC
Cherokee Pit



This is one of the best investments I have ever made. The best reward is when someone comes up and tells me, "That is the best chicken I ever had. How do you keep it so juicy?"

Stewart Ellis, Clear Brook, VA
60 years of BBQ experience

THE BBQ42 CHICKEN FLIPPER: Decades on, it's still the gold standard.



An Entertainer's Favorite

A revolutionary charcoal grill for barbecue chicken and anything else you wish to cook with direct heat. It holds about 32 burgers or 40 pounds of bone-in chicken.

- Sandwich grate makes it easy to flip a case of chicken.
- Adjustable charcoal pan raises the fire for steaks, hamburgers, and hotdogs.
- Optional griddle for smash burgers or the biggest breakfast around!
- Optional 10" high lid and flat grate make it easy to cook low and slow.

**"Family and friends
always say it's the best
chicken they ever had!"**

—John OBrien,
chicken flipper owner



Shown with optional
wagon chassis, stainless
steel lid, and flat grate.

STAINLESS STEEL

Stainless steel eliminates rust and makes the grill easier to maintain.



**BBQ26S With Optional
Stainless Steel Body
and Pedestal Base**

The pedestal base raises the BBQ18 and BBQ26 to a working height and replaces the pipe legs on the BBQ26S.



**BBQ42 With Optional
Stainless Steel Body**



**BBQ42 With
Optional Stainless
Steel Body, Charcoal
Pullout, and Trailer**

**BBQ144 With
Optional Stainless Steel
Lids, Slide-Out Grates,
and Trim Package**



Older models shown in photos.

COMBI42 GRILL

With the COMBI42, you can finally do it all. This shockingly competent cooker combines the best features of our popular BBQ42 and PR42 models to feed your backyard party or cater your event with equal ease.



Shown with optional charcoal pullout.



Features

- ✓ 12" Lid
- ✓ 13" Tires
- ✓ Stainless Steel Double-Sided Pivoting Grate
- ✓ Stainless Steel Stationary Grate
- ✓ Grease Drip Pan
- ✓ Charcoal Pan Insert/Grill Pan
- ✓ Brackets to Raise Charcoal Pan
- ✓ Thermometer
- ✓ Charcoal Vent



Drip Pan

Model	Grate Size	Size	Weight
COMBI42	22" x 34"	46"h x 56"l x 34"w	325 lbs



Stationary Grate



Thermometer



Spin Vent

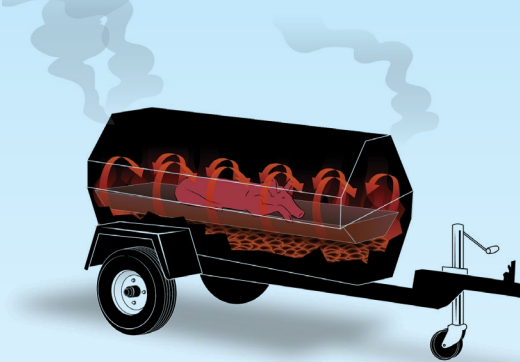
PIG ROASTERS

Cook pretty much anything. Seriously.

Yes, they're designed for whole pigs. But the indirect heat, high fuel capacity, and extremely stable temperature let you cook a huge range of foods. Especially those big cuts with long cook times.

The charcoal units hold enough fuel to last 12 hours. Add an electronic temperature controller, and you can safely leave your pig roaster cooking all night and sleep like a baby.

The one thing a base model pig roaster can't do is grill and sear. But the optional grill pan removes that limitation. It turns your pig roaster into an all-purpose barbecue powerhouse that will have your neighbors begging for an invite to the next cookout.



The removable drip pan between the fire and the food creates vertically indirect heat.



PR60 With Optional Wagon Chassis and Charcoal Pullout

Model	Grate Size	Size	Weight	Fuel Type		Trailer
				Charcoal	Gas	
PR36	14" x 35"	46"h x 43"l x 25"w	175 lb	✓		
PR42	20" x 41"	39"h x 50½"l x 30"w	250 lb	✓		
PR42G	20" x 41"	39"h x 52"l x 30"w	265 lb		✓	
PR60	24" x 58"	44"h x 68"l x 33"w	375 lb	✓		
PR60G	24" x 58"	44"h x 71"l x 33"w	400 lb		✓	
PR60T	24" x 58"	44"h x 100"l x 40"w	475 lb	✓		✓
PR60GT	24" x 58"	44"h x 117"l x 40"w	500 lb		✓	✓
PR72	24" x 70"	44"h x 80"l x 33"w	400 lb	✓		
PR72G	24" x 70"	44"h x 83"l x 33"w	425 lb		✓	
PR72T	24" x 70"	44"h x 112½"l x 40"w	510 lb	✓		✓
PR72GT	24" x 70"	44"h x 127"l x 40"w	535 lb		✓	✓



“There is no force in the world as we know it that would make me give up my PR60T.”

Wild Wade, Wild Wade’s BBQ, Citrus Heights, CA



“If you need to cook for thirty-plus people, the PR60T is the perfect choice!”

Anthony Ginter, Campbellsville, KY

36" Capacity



PR36

36" Charcoal

30–40 lb pig

With 2nd Tier Grate:

- 4 whole briskets
- 10 pork butts

With Grill Pan:

- 25–30 burgers
- 12–15 ribeye steaks



PR42

42" Charcoal



PR42G

42" Gas

42" Capacity

100 lb pig

With 2nd Tier Grate:

- 8–9 whole briskets
- 18–20 pork butts

With Grill Pan:

- 40–45 hamburgers
- 20–25 ribeye steaks



PR60

60" Charcoal



PR60G

60" Gas



PR60T

60" Charcoal Trailer



PR60GT

60" Gas Trailer

60" Capacity

200 lb pig

With 2nd Tier Grate:

- 16–18 whole briskets
- 30–35 pork butts

With Grill Pan:

- 70–75 hamburgers
- 30–35 ribeye steaks



PR72

72" Charcoal



PR72G

72" Gas



PR72T

72" Charcoal Trailer



PR72GT

72" Gas Trailer

72" Capacity

275 lb pig

With 2nd Tier Grate:

- 18–20 whole briskets
- 40–44 pork butts

With Grill Pan:

- 85–90 hamburgers
- 40–45 ribeye steaks

Some models are shown with optional upgrades. Pig capacities are listed as dressed weights.

Features

- ✓ Cooking grates are made of rust-free food-grade T304 stainless steel rod and easy to clean.
- ✓ Grill bodies are made of 13-gauge welded steel and painted with black heat-resistant paint in an attractive matte finish.
- ✓ Slanted drip pan drains the grease to the outside of the unit through a drip tube (except for the PR36).
- ✓ Stainless steel calibratable thermometer
- ✓ Charcoal models have top and bottom dampers to control the temperature and a removable charcoal vent in the bottom of the roaster.
- ✓ Gas models have a propane safety valve and a 1" pipe burner. Trailer models also come with a gas tank mount.
- ✓ Trailer components are mounted directly to the roaster body for efficiency and weight savings. PR trailers feature a 2" ball hitch and safety chains, heavy-duty wheel jack, rubber torsion axles, road tires, and DOT-compliant flush-mount LED lights, reflector strips, and VIN plate. We are a licensed trailer manufacturer and can provide a certificate of origin for trailer models.

Find a dealer or get more photos and product information at MeadowCreekBBQ.com/pr



Stainless Steel Grate



Removable Drip Pan



Stainless Steel Thermometer



Vents and Drip Tube



Fender and LED Lights
Trailer Models



Gas Safety Valve
Gas Models



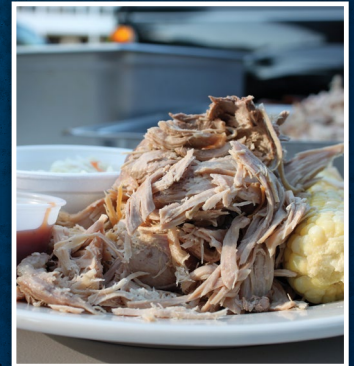
Read our free buyer guide to learn about Meadow Creek products and find the right pit for you: MeadowCreekBBQ.com/buyerguide

I own two restaurants and have been in this business for over 25 years. Having pig roasts is probably the most popular thing we've done and the Meadow Creek Pig Roaster is an incredible piece of equipment. We were very surprised to see the quality of the product, as well as how easy it is to operate.

Our customers love being part of the process and seeing the pig (and other items) cooking. The smell alone drives people crazy. I just wanted to say thank you for your help and for providing me with such a quality piece of equipment. It has made us more profitable and more unique.

John McCarthy

Casey's Publihouse, Holliston, MA



PR60GT With Optional Trim Package and Gas Tank



PR Series trim package includes aluminum wheels and stainless steel vents, lid handle, and fenders.

Customize Your Pig Roaster

Refer to MeadowCreekBBQ.com/pr for available options.



Vinyl Cover (VC)

Keep Your Cooker Clean and Dry



Charcoal Pullout (CPO)

Manage the Fire During the Cook



Charcoal Pan Insert (CPI)

Convert Gas Models to Charcoal; Simplify Clean-Up on Charcoal Models



Charcoal Grill Pan (CGP)

Grill With Direct Heat



2nd Tier Grate (2TG)

Double the Cooking Surface (8" clearance between grates)



Rib Rack (RR)

Cook More Ribs at Once



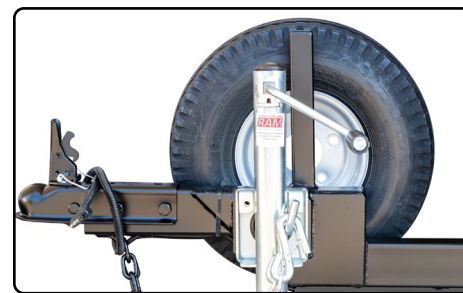
Doors in Lid (DIL)

Access Food Without Opening the Lid



Wagon Chassis (WC)

For Patio Models



Spare Tire Mounted (STM)

For Trailer Models

The last time I cooked a whole pig on a borrowed rotisserie it was a flaming nightmare... Using my Meadow Creek PR60G, I set the temp and loaded the pig, and down came the rain and a fair bit of wind. I adjusted the gas to keep the heat flowing and from then on it was sweet dreams.

Blake Anderson, Chef/Owner
Terre It Up Catering, Alberta, Canada

I cooked a 230-pound hog for our Restaurant Managers Cookout and it was absolutely superb—both the result and the cooker. I can't say enough about the cooker, which performed admirably. It is an exceptional piece of equipment—one that we will use often. It's quality and dependability throughout!

A. J. Iovino, VP Marketing
Pizza Hut of Ft. Wayne, Inc, Fort Wayne, IN

SK23 STEAK GRILL

A compact charcoal grill for steak competitions, backyard barbecues, tailgate parties, and campouts. It heats up fast and reaches 400–600 degrees F for grilling perfect steaks, brats, burgers, and anything else that loves direct heat.

Features

- ✓ Stainless Steel Cooking Grate
- ✓ Removable Charcoal Grate With 2-Zone Cooking Area
- ✓ 2-Panel Set of 13¾" GrillGrates
- ✓ Lid With Thermometer
- ✓ Cool-to-the-Touch Handles
- ✓ Aluminum Foil Ash Pan



Shown With Optional Stainless Steel Ash Pan

Model	Grate Size	Size	Weight
SK23	13" x 22½"	17"h x 30"l x 19"w	60 lb

Options

- ✓ Griddle
- ✓ Stainless Steel Ash Pan
- ✓ Raised Pedestal
- ✓ Stainless Steel Body



Optional Stainless Steel Ash Pan



Divided Firebox



Optional Stainless Steel Body



CATERER'S DELIGHT TRAILERS

Take the party anywhere with this flexible, heavy-duty barbecue rig. The BBQ42 chicken cooker with our signature rotating sandwich grates takes the stress out of making perfect chicken or anything else you cook directly over coals. Meanwhile, the PR pig roaster handles all your indirect or low and slow cooking.

Now anything your crowd craves is within your power to cook.

Choose between two pig roaster sizes (PR60 or PR72) and gas or charcoal-fired. Refer to the BBQ42 and PR upgrades for ways to customize these trailers.



© Steven Johnson



CD108G

Standard Layout
With the Pig Roaster in the Front

Model	Pig Roaster	Dimensions	Weight
CD108	PR60 (Charcoal-Fired)	47"h x 148"l x 54"w	825 lb
CD108G	PR60G (Gas-Fired)	47"h x 148"l x 54"w	850 lb
CD120	PR72 (Charcoal-Fired)	47"h x 160"l x 54"w	950 lb
CD120G	PR72G (Gas-Fired)	47"h x 160"l x 54"w	975 lb



CD120

THE CATERING RIG

THAT'S READY FOR ANYTHING



CD120 Caterer's Delight
With Alternate Layout

Older models shown in photos.

Multiply Your Return on Investment With These Upgrades:

- ✓ 2nd Tier Grate
- ✓ Rib Rack
- ✓ Doors in Lid
- ✓ Charcoal Pullouts
- ✓ Charcoal Grill Pan
- ✓ Flat Grate

CD108 Caterer's Delight
With Alternate Layout and Charcoal Pullouts



TANK SMOKERS

Show you mean business with a Meadow Creek tank smoker.

For buttery-smooth function, stable temperatures, and giving you that air of barbecue authority, nothing beats a Meadow Creek reverse-flow tank smoker. We've seen pitmasters turn into raving fanatics after experiencing this perfectly-tuned fusion of traditional offset cooking and pioneering design.

Like all fine handmade goods, you'll feel the Meadow Creek difference from the first touch. Rounded tank ends optimize airflow, heavy doors with positive-lock latches keep your cook chamber tight, sliding stainless steel grates make access easy and never rust, and smooth welds make everything look good.

Pick from a long list of upgrades to make your tank smoker your own. Upgrade to an insulated firebox and save fuel. Add rib racks or stainless steel workshelves. Add the wildly popular BBQ42 chicken flipper to the front of your smoker trailer. And that's just the start. Outdoor cooking will never be the same.



Heat is produced in the side-mounted firebox, flows under the sealed drip pan to the other end, rises into the smoking chamber, then returns toward the firebox and leaves the stack.



TS250 Tank Smoker

With Optional Stainless Steel Exterior Shelves and BBQ42 Chicken Cooker With Optional Charcoal Pullout

Learn more about these smokers and get tips for choosing the right one: MeadowCreekBBQ.com/ts

Model	Grate Size	Size	Weight	Fuel Type	Capacities			Trailer
				Charcoal	Pork Butts	Whole Briskets	Baby Back Ribs	
TS70P	20" x 24" top 22" x 24" bottom	64"l x 44"w x 76"h	535 lb	✓	7-8	5-6	7-8	
TS120P	20" x 48" top 22" x 48" bottom	74"l x 150"w x 57"h	785 lb	✓	21-22	13-14	15-18	
TS120	20" x 48" top 22" x 48" bottom	150"l x 58"w x 74"h	1,275 lb	✓	21-22	13-14	15-18	✓
TS250	24" x 58" top 26" x 58" bottom	175½"l x 58"w x 83"h	1,630 lb	✓	31-32	19-22	26-34	✓
TS500	(2) 30" x 34" top (2) 34" x 34" middle (2) 34" x 34" bottom	202"l x 72"w x 92"h	2,800 lb	✓	64-65	46-50	50-60	✓
TS1000	(2) 33" x 63" top (4) 39.75" x 63" middle (2) 37" x 63" bottom	278"l x 72"w x 97"h	5,000 lb	✓	178-182	130-140	140-165	✓



TS70P
70-Gallon Tank Smoker



TS120P
120-Gallon Tank Smoker



TS120
120-Gallon Tank Smoker Trailer



TS250
250-Gallon Tank Smoker Trailer



TS500
500-Gallon Tank Smoker Trailer With
Optional Exterior Shelves and
Live Smoke in Warming Box



TS1000
1000-Gallon Tank Smoker Trailer
With Optional Stainless Steel
Exterior Shelves

Tank Smoker Features

- ✓ Cooking grates are made of rust-free food-grade T304 stainless steel rod and easy to clean.
- ✓ Tanks are made of 3/16" plate steel and fireboxes of 1/4" plate steel and painted with black heat-resistant paint in an attractive matte finish.
- ✓ Stainless steel calibratable thermometer
- ✓ Grate in firebox with slide-out ash pan
- ✓ Positive-lock latches on all doors
- ✓ Drain with ball valve for draining the tank
- ✓ Trailer models are built on a tubular frame and feature a 2" ball hitch and safety chains, heavy-duty wheel jack, rubber torsion axles, road tires, and DOT-compliant flush-mount LED lights, reflector strips, and VIN plate. We are a licensed trailer manufacturer and can provide a certificate of origin for trailer models.

From Amateur to Professional...

I'm really impressed with the quality of this equipment... I cooked 4 pork butts, 8 racks of St. Louis style ribs, and a case of whole chicken legs. They turned out the best I've ever made, no exaggeration! These cookers make a seasoned professional out of an amateur.

Jim

JD's Smoky Pit BBQ

Find a dealer or get more info at MeadowCreekBBQ.com/ts



Stainless Steel Grates



Stainless Steel Thermometer



Firebox and Ash Pan



Positive-Lock Latches



Drain With Ball Valve



LED Lights
Trailer models



Read our free buyer guide to learn about Meadow Creek products and find the right pit for you: MeadowCreekBBQ.com/buyerguide

Customize Your Tank Smoker

Refer to MeadowCreekBBQ.com/ts for available options.



BBQ42 or BBQ26S
For Trailer Models



Stainless Steel Exterior Shelves (SSES)
Easier Cleanup



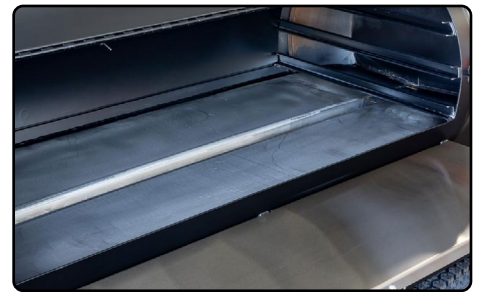
Insulated Firebox (IF)
Save on Fuel and Maintenance



Extra Grate in Smoker (XGS)



Trim Package (TP)
Aluminum Wheels and Stainless Steel Stack,
Vents, Door Handles, and Fenders



Stainless Steel Drip Pan (SSDP)



Vinyl Cover (VC)



Live Smoke in Warming Box (LSW)
Cook Meat in the Warming Box



Spare Tire Mounted (STM)
For Trailer Models



Left: Dual TS500 Tank Smoker Trailer With Optional Tandem Axles and Stainless Steel Exterior Shelves and Smokestacks



Right: TS70P Tank Smoker With Optional Wagon Chassis, Probe Ports, and Stainless Steel Exterior Shelf

GAS ASSIST

The Taste of Wood: The Convenience of Gas

Do you love traditional wood and charcoal smokers, but wish you could “cheat” once in a while?

How would you like to throw away your weed burner and preheat your smoker with the flip of a switch? Or start an all-night cook and go to sleep, knowing your temp will stay rock-solid even after the coals burn down?

Meadow Creek’s revolutionary gas-assist option upgrades your TS or BX smoker into a shape-shifting jack-of-all-trades. It can preheat your smoker, light your wood or charcoal, and automatically hold your pit temp within 5 degrees of your set point.

It’s like having two pits in one. Smoke the traditional way with just coals and wood, cook on gas alone, or perfect your favorite hybrid approach for the best of both worlds. You’ve never smoked like this before.



Features

- ✓ Electronic thermostat with digital readout
- ✓ Uses 110-volt household power
- ✓ 5 lb. high-pressure gas regulator
- ✓ Maintains consistent temperature automatically

Two Ways to Get Gas Assist

1. Purchase your pit with the gas assist upgrade.
2. Purchase your pit with only the gas assist port and removable cover so you can easily upgrade to gas assist later.

The gas assist unit can be attached or removed any time with just four bolts.

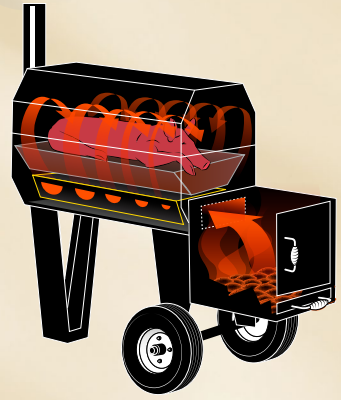


Recommended for the following models:

TS70, TS120, TS120P, TS250, TS500, BX50, BX100

SQ36 OFFSET SMOKER

If you're a backyard enthusiast tired of fighting cheap smokers from big-box stores, you'll love the SQ36. You can cook 5 to 6 pork butts or 2 whole briskets on the welded stainless steel grate, or add an optional 2nd Tier Grate and double your capacity. Add the optional grill pan to cook burgers and steaks over direct heat, and you've got one of the finest all-purpose backyard pits on the market.



Heat enters the bottom of the cooking chamber through the smoke distributor, which helps keep the temperature consistent throughout the cooker.

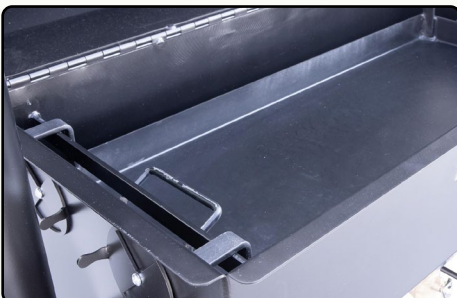
Model	Grate Size	Size	Weight
SQ36	14.5" x 35"	56"h x 61"l x 29"w	250 lb



"I couldn't be happier with the versatility of the SQ36. Maintaining temperature is very easy once you get the vents at the right spot."

—Kevin Rau

Refer to MeadowCreekBBQ.com/sq for a list of features, available upgrades, and cooking stories.



Charcoal Grill Pan (CGP)



2nd Tier Grate (2TG)



Ash Pan (AP)

BOX SMOKERS

If your priorities are compactness, efficiency, and ease of use, our box smokers are your top choice. The best-selling BX50 runs for an incredible 8 hours at 250 degrees on 20 pounds of charcoal. These hold a steady temperature and work great with or without water, so you can easily smoke dry meats like jerky as well as more common cuts.

Features

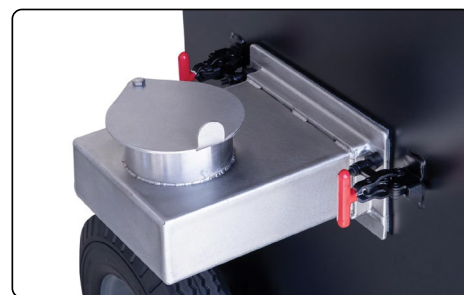
- ✓ Slide-out cooking grates made of rust-free food-grade T304 stainless steel rod
- ✓ Double walls with 1" insulation
- ✓ Auto-feed water system and a 5-gallon water jug
- ✓ Slide-out charcoal basket and ash pan
- ✓ Painted with black heat-resistant paint in an attractive matte finish
- ✓ Uncoated steel interior
- ✓ Stainless steel calibratable thermometer
- ✓ Positive-lock latches on all doors



Sliding Grease Pan and Stainless Steel Grates



Slide-Out Charcoal Basket
Grate for the Ashes to Fall Through



Water Pan
Optional Stainless Steel

Model	Grate Size	Size	Weight	Fuel Type	Capacities			Trailer
				Charcoal	Pork Butts	Whole Briskets	St. Louis Ribs	
BX25	11½" x 17½"	30"d x 36"w x 55"h	325 lb	✓	6	3	6	
BX50	18" x 22"	34"d x 44"w x 66"h	625 lb	✓	16	8	12	
BX100	20" x 27"	33"d x 50"w x 85"h	795 lb	✓	22	12	16	



BX25

Comes standard with 3 grates;
holds up to 5 grates.



BX50

Comes standard with 4 grates;
holds up to 7 grates.
With optional probe port.



BX100

Comes standard with 4 grates;
holds up to 7 grates.



“The results I get from this beast are amazing! ... The combination of smoke and moisture gives me tender food with a great smoke ring. I highly recommend this product!”

—Chris Papatolis

BX50

Shown With Optional
Stainless Steel Water Pan
and Stainless Steel Interior



Get more photos and information at
MeadowCreekBBQ.com/bx

Customize Your BX Smoker

Refer to MeadowCreekBBQ.com/bx for available options.

- ✓ Vinyl cover (VC) protects your smoker from dust and rain.
- ✓ Custom color: Fire Engine Red, John Deere Green, or New Holland Blue
- ✓ Extra grates in smoker (XGS) add more cooking surface. The tracks are 2.25" apart on the BX25, 3" apart on the BX50, and 4" apart on the BX100. A pork butt or whole brisket requires the height of two spaces.
- ✓ **Highly recommended:** Stainless steel interior (SSI) eliminates the possibility of rust inside the smoker and makes it easier to clean. If rust develops on the ceiling of the smoker, it will mix with the moisture in the smoker and drip onto your meat while cooking.
- ✓ Rib rack (RR) sets on a cooking grate and holds the ribs on edge.



Extra Grates in Smoker (XGS)



Gas Assist



Rib Racks (RR) and
Stainless Steel Interior (SSI)

I use the BX50 for brisket, pork butts, chicken, bacon, and anything else I get in the mood to make. I also use it for all of my cold smoking. The way these hold temperature for hours without adjustments is amazing. I literally can do a 10–12 hour smoke on my BX50 with only 2 chimneys of charcoal, a couple of handfuls of lump, and my wood of choice.

Todd Eckert, Bernville, PA

The BX50 has lots of room, and I can set it and forget it.... It is built to last and my boys will be getting it once I can't do this anymore. I've had the BX50 for years and cooked hundreds of pounds of food on it. If you are thinking about getting one, do it. It's fun and this smoker will last. And the best part is that every one asks you to their party!

Phil Janssens, North Wales, PA

STAINLESS STEEL

Stainless steel eliminates rust and makes the grill easier to maintain.

Ask your dealer about upgrading your smoker to stainless steel or building one for your outdoor kitchen.



Older models shown in photos.

**BX50 Box Smoker
With Optional
Stainless Steel Body**

CUSTOM BARBECUE TRAILERS

Ask your dealer for help designing a trailer with your choice of Meadow Creek equipment.



TS250, PR72, BBQ42

Older models shown in photos.

© Hank Dorsey



4-Pit Chicken Cooker and Pig Roaster With Roof

Custom Trailer Features and Options

- ✓ Heavy-duty road-worthy frame and suspension with 2-5/16" ball hitch
- ✓ Optional hinged roof system with vented ridge, aluminum diamond plate 4' wings, and gas spring-assist lifts
- ✓ Options such as electric brakes, aluminum toolboxes, wood box with stainless steel cover, mounted spare tire and fire extinguisher, trim package with aluminum wheels



Storage Box



Inside View of Hinged Roof



PG25 PATIO GRILL

With the PG25, you can grill burgers, brats, and steaks, or raise the removable charcoal pan to cook ribs, pork shoulders, and whole turkeys on indirect heat. Ideal for the backyard or patio, the PG25 holds 16–20 burgers, 7–9 ribeye steaks, or 1 rack of spare ribs.

Upgrades

- ✓ Vinyl Cover
- ✓ 11" x 15" Stainless Steel Shelves



PG25 Charcoal Grill

With Optional
Stainless Steel Shelves

Model	Grate Size	Size	Weight
PG25	13" x 22"	40"h x 32"l x 22"w	105 lb

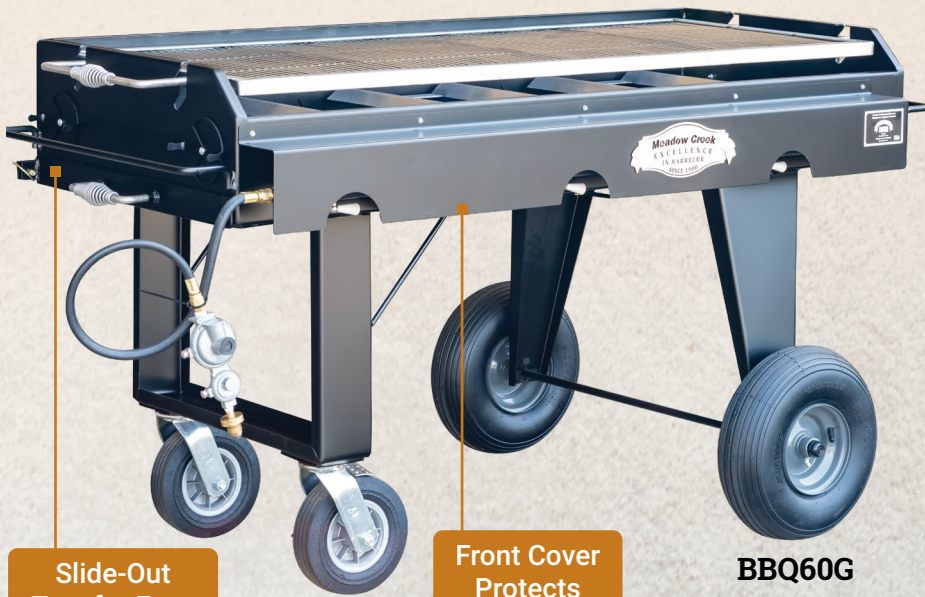


FLAT TOP GRILLS

Tailored for the pitmaster grilling big quantities of burgers, dogs, or steaks day in and day out. Our flat top grills perform flawlessly under the demanding conditions typical of restaurants, festivals, and other commercial settings. Welded stainless steel cooking grates are rugged, easy to clean, and 100-percent rust-free.

Model	Grate Size	Size	Weight	Fuel Type		Capacities	
				Gas	Charcoal	Burgers	Steaks
BBQ36	22" x 33"	36½"h x 45"l x 24"w	130 lb		✓	40	16–20
BBQ36G	22" x 33"	41½"h x 45"l x 35"w	172 lb	✓		40	16–20
BBQ60	22" x 57"	35"h x 67"l x 24"w	200 lb		✓	70	28–32
BBQ60G	22" x 57"	41"h x 68"l x 32"w	318 lb	✓		70	28–32





Slide-Out Tray for Easy Cleaning on Gas Models

Front Cover Protects Gas Valves

BBQ60G
60" Gas Grill



"We've had our BBQ60G for 12 years, and it still looks like new. I recommend these grills to all caterers and food vendors."

Billy Christine
Smoke 'n Dudes Catering

Gas Model Features



Removable Stainless Steel Guards
Keep Grease and Debris off the Burners



Grease Pan



Gas Valve



Griddle



Hinged Lid

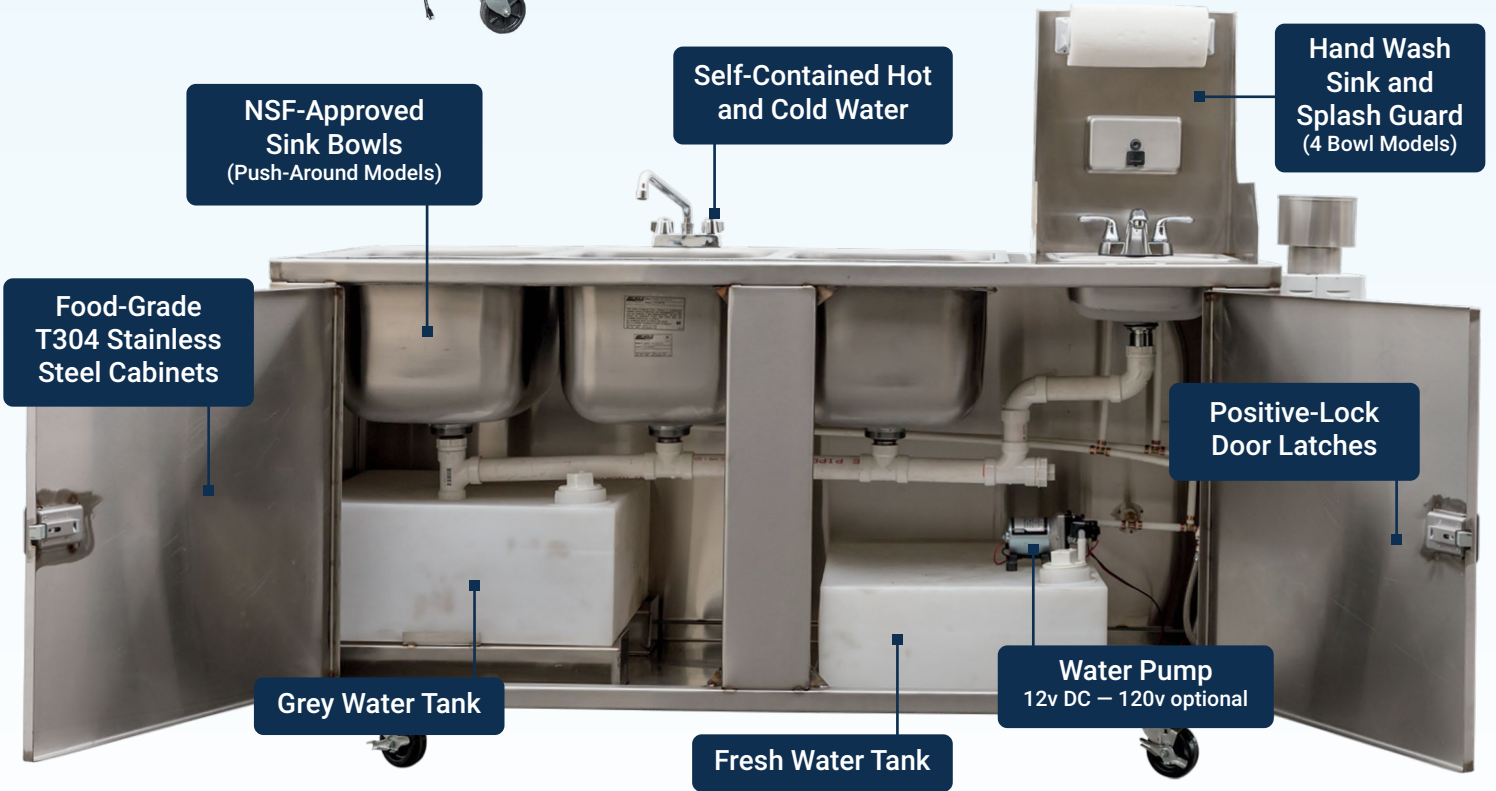
SELF-CONTAINED MOBILE SINKS

Take the hassle out of onsite prep and cleanup with our line of mobile sinks, built of food-grade T304 stainless steel.

Fresh and grey water tanks are built in, and most models include integrated water heaters.

The push-around sinks have NSF-approved bowls.

Choose a freestanding model or add one to a custom trailer.



On-Demand LP Water Heater



Garden Hose Connector



Hand Wash Kit
Paper Towel Holder, Soap Dispenser, and Splash Guard



Drain Kit (Optional)

Model	Water Heater	Bowls	Size	Bowl Size	Weight	Fresh Water	Grey Water
1B-HW-LP	On-Demand LP Heater	1 Bowl Hand Wash	39"w x 29"d x 51"h	14"w x 16"d x 6"h	180 lb	11 gal	15 gal
1B-HW-E	2 Gallon Electric						
2B-P	No Heater	2 Bowl Prep	86"w x 28"d x 45"h	16"w x 20"d x 13½"h	295 lb	18 gal	24 gal
3B-CU-LP	On-Demand LP Heater	3 Bowl Cleanup	71"w x 28"d x 46"h	16"w x 20"d x 13½"h	315 lb	18 gal	24 gal
3-B-CU-RV	6 Gallon Electric/ LP RV Heater						
4B-CU-LP	On-Demand LP Heater	4 Bowl Cleanup	91"w x 28"d x 59"h	16"w x 20"d x 13½"h Hand Wash: 10"w x 12"d x 5"h	385 lb	18 gal	24 gal
4B-CU-RV	6 Gallon Electric/ LP RV Heater						
3B-CU-TM-LP	On-Demand LP Heater	3 Bowl Cleanup Trailer Mount	68"w x 24"d x 23"h	14"w x 16"d x 6"h	215 lb	11 gal	15 gal
3B-CU-TM-RV	6 Gallon Electric/ LP RV Heater						
4B-CU-TM-LP	On-Demand LP Heater	4 Bowl Cleanup Trailer Mount	83"w x 24"d x 23"h	14"w x 16"d x 6"h Hand Wash: 10"w x 12"d x 5"h	250 lb	18 gal	24 gal
4B-CU-TM-RV	6 Gallon Electric/ LP RV Heater						

Water Heaters:
Choose between on-demand gas and RV combination electric/gas heaters.



1 Bowl Hand Wash
1B-HW-LP



2 Bowl Prep
2B-P



3 Bowl Cleanup
3B-CU-LP



4 Bowl Cleanup
4B-CU-LP

FORGED BY TRADITION. POWERED BY PITMASTERS.

Do you hate sloppy work, broken promises, and half-hearted efforts?

Meadow Creek's premium hand-built grills and smokers are inspired by the honesty, hard work, and obsession with excellence that drive the world's best barbecue professionals.

You guys keep the good times going. We give you the tools to make it easy and fun.



Older models shown in photos.



Forty years on, more and more pitmasters turn to Meadow Creek when failure is not an option.

Join the tribe of barbecue trendsetters who refuse to settle for "good enough."